

MERCURY TRACER



19

92

MERCURY TRACER. YOU WON'T BELIEVE THE SIZE OF IT.

Chances are if you're reading this, you've made the decision to buy a new car. And now the real decisions start.

How much car do you want? How much car do you need? How much can you afford? Does it have enough room? Will you get your money's worth? Will you enjoy it?

Which brings us to the new 1992 Mercury Tracer. Even though it's small enough outside to squeeze into a tight parking space, Tracer is roomy enough inside to seat five adults with plenty of trunk room to spare. It's fun to drive. Well-powered, yet economical. And not to be overlooked, Tracer looks good. In fact, Tracer offers so much in a small car that you may not believe the size of it.

One more thing. Tracer is designed and built by a lot of people who really want you to like it. In fact, they want you to like it as much or more than any car in its class, built anywhere in the world. They spent a lot of time, money and effort to impress you with Tracer's quality. They even learned to build Tracer with sophisticated techniques that a lot of car manufacturers just don't have.

Tracer comes in three different models: four-door notchback sedan, a performance-tuned 16-valve LTS (Luxury Touring Sedan) and a versatile wagon. Choose the one that makes the most sense for you. Then ask your dealer for a test drive. You've waited long enough.



If you've been concerned that you can't own a small sedan without making big compromises, your concerns are over. Introducing the new Mercury Tracer. Upon close examination, you'll find that Tracer is anything but a typical small car. The



Tracer featured here in Light Titanium Clearcoat Metallic. Some equipment shown may be optional.

Handling.

The fully independent suspension system employs front and rear stabilizer bars for enhanced vehicle handling and reduced body roll.

Ride.

Tracer's strut suspension offers exceptionally long wheel travel normally found on much larger, heavier cars to help smooth out the rough spots on less-than-perfect roads.

Balance.

Tracer's manufacturing includes the most accurate high-speed dynamic wheel and tire balancing available. This helps keep tire noise and vibration down while promoting even tire wear.

Durability.

Two-sided galvanized steel is used extensively on outer body panels to protect against rust and corrosion.

Management.

EEC-IV, a sophisticated on-board computer with the capacity to process more than 312,000 operations per second, continuously monitors specific engine functions to maintain optimum performance.

Responsiveness.

Front-wheel drive was selected for its traction and control-enhancing abilities.

Ignition.

Tracer's distributorless ignition greatly improves spark accuracy while requiring no maintenance.

TRACER LOOKS GOOD FROM ANY ANGLE.

While many may admire Tracer for its looks, one drive will convince you that much of its beauty lies beneath its surface.

A close look at what makes a Tracer a Tracer demonstrates that a small car can come up big in many important areas. For instance, the team that designed Tracer placed considerable attention on delivering responsive handling and performance characteristics for a car in its class. More emphasis was given to smoothing out the noise, vibration and harshness typically found in small cars.

In every aspect of its design, Tracer maintains a steady focus on providing both driver and passengers with the room and comfort they deserve. And on defying the notion that a small car cannot match the sheer satisfaction of owning a larger, more expensive model.

Some of Tracer's more notable features are indicated here. Individually, each is impressive. Together, they create a small sedan that looks good from any angle.

Quiet.

Tracer's stainless steel exhaust system includes a flexible coupling which serves to reduce the transmission of noise and vibration.

Isolation.

Tracer's front and rear subframes help keep vibration from reaching driver and passengers.

Alignment.

Precise wheel alignment at the assembly plant not only contributes to Tracer's exceptional ride and handling, it helps increase tire life.

Convenience.

Rear seat heat ducts provide a considerate measure of direct warmth for back seat passengers.

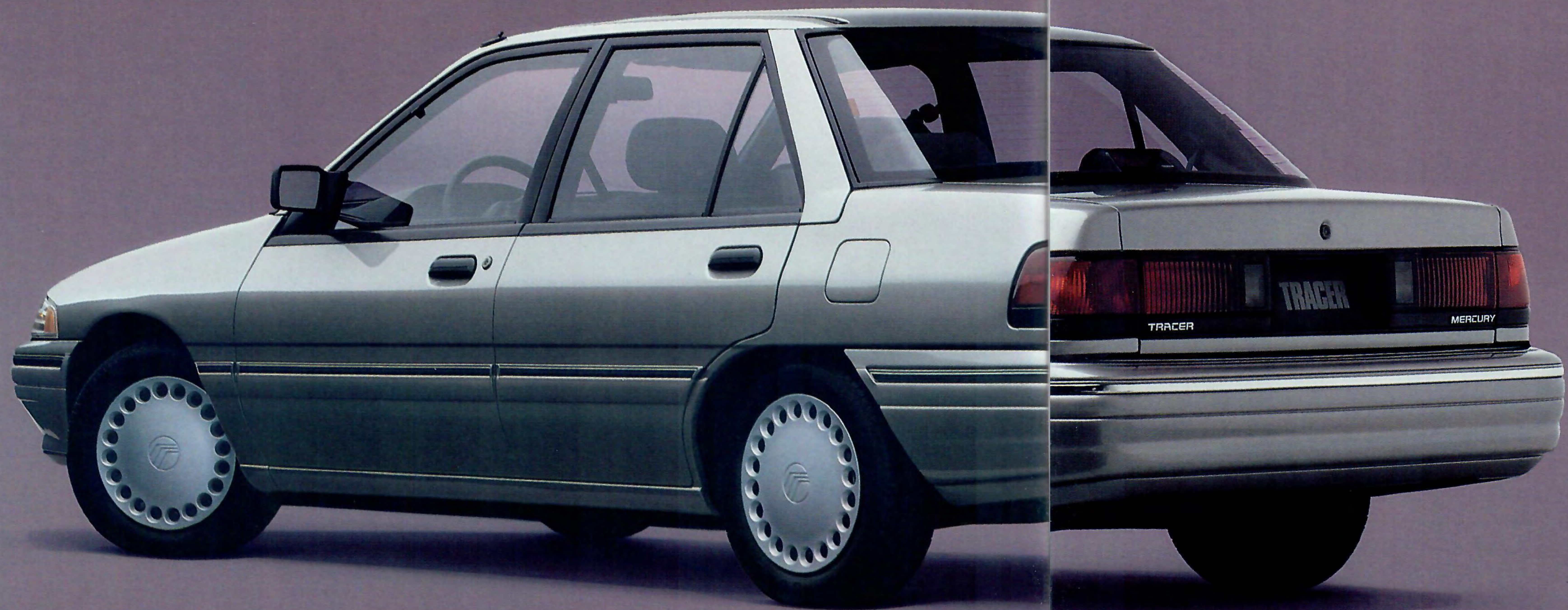
Efficiency.

Sequential multi-port electronic fuel injection (SEFI) delivers fuel to each cylinder in precise firing sequence to deliver optimum performance and economy out of each drop of fuel.*

Aerodynamics.

Tracer's smooth lines include flush windshield glass and semi-flush side glass to hush wind noise while promoting fuel efficiency at highway speeds.*

*See EPA statement in back of catalog.



Tracer featured in Light Titanium Clearcoat Metallic. Some equipment shown may be optional.



You've got to balance a lot of things in your life. Your job. Your family. Your friends. Your checkbook. How are you going to fit it all in? How else but in a four-door, five-passenger sedan that offers power, economy, comfort, road handling ability and interior room in perfect balance. Happy trails.

TRACER. IT'S SMALL OUTSIDE. BIG INSIDE. AND IT'S MOVING IN NEW DIRECTIONS.

Tracer offers sizable evidence that a small car doesn't have to be a big compromise.

For instance, this car has more room inside than Civic, Sentra, Corolla or Prizm. Tell that to your neck and shoulders. With Tracer's 91 cubic feet of passenger room, up to five adults can be seated without feeling cramped. That's comforting news for families, commuters and everyone else who might like to come along for the ride.

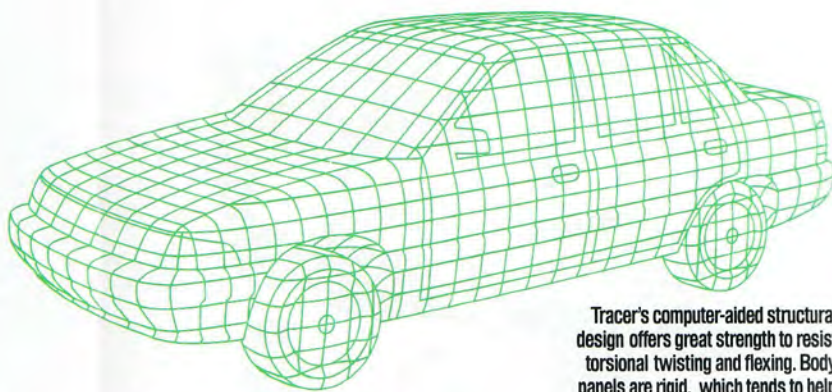
Tracer isn't just large in interior room, it's large in interior conveniences with standard features like an ergonomically positioned instrument cluster that includes analog speedometer, tachometer, fuel and temperature gauges. Comfortable cloth reclining front buckets offer firm support, while the 60/40 split rear seat adds even more capacity to Tracer's spacious 12.1 cubic-foot trunk.

Comfort will get you nowhere without performance. You'll find it in

Tracer's 1.9-liter engine, which produces 88 horsepower with plenty of low-end torque for responsive acceleration. Sophisticated features like sequential multi-port electronic fuel injection (SEFI), a mass airflow sensor and an electronic distributorless

ignition system contribute to Tracer's smooth power and efficiency. The engine is matched to a precise five-speed manual overdrive transaxle, or choose the optional four-speed electronically controlled automatic.

Tracer's comfort and performance are enhanced by a fully independent suspension system with front and rear stabilizer bars that produces both impressive ride and handling characteristics. Rack-and-pinion steering and power-assisted front disc brakes complete this well-rounded package.



Tracer's computer-aided structural design offers great strength to resist torsional twisting and flexing. Body panels are rigid, which tends to help reduce vibration and noise.



Tracer's optional four-speed electronic automatic transaxle shifts smoothly while providing improved performance and fuel economy over three-speed automatics.*



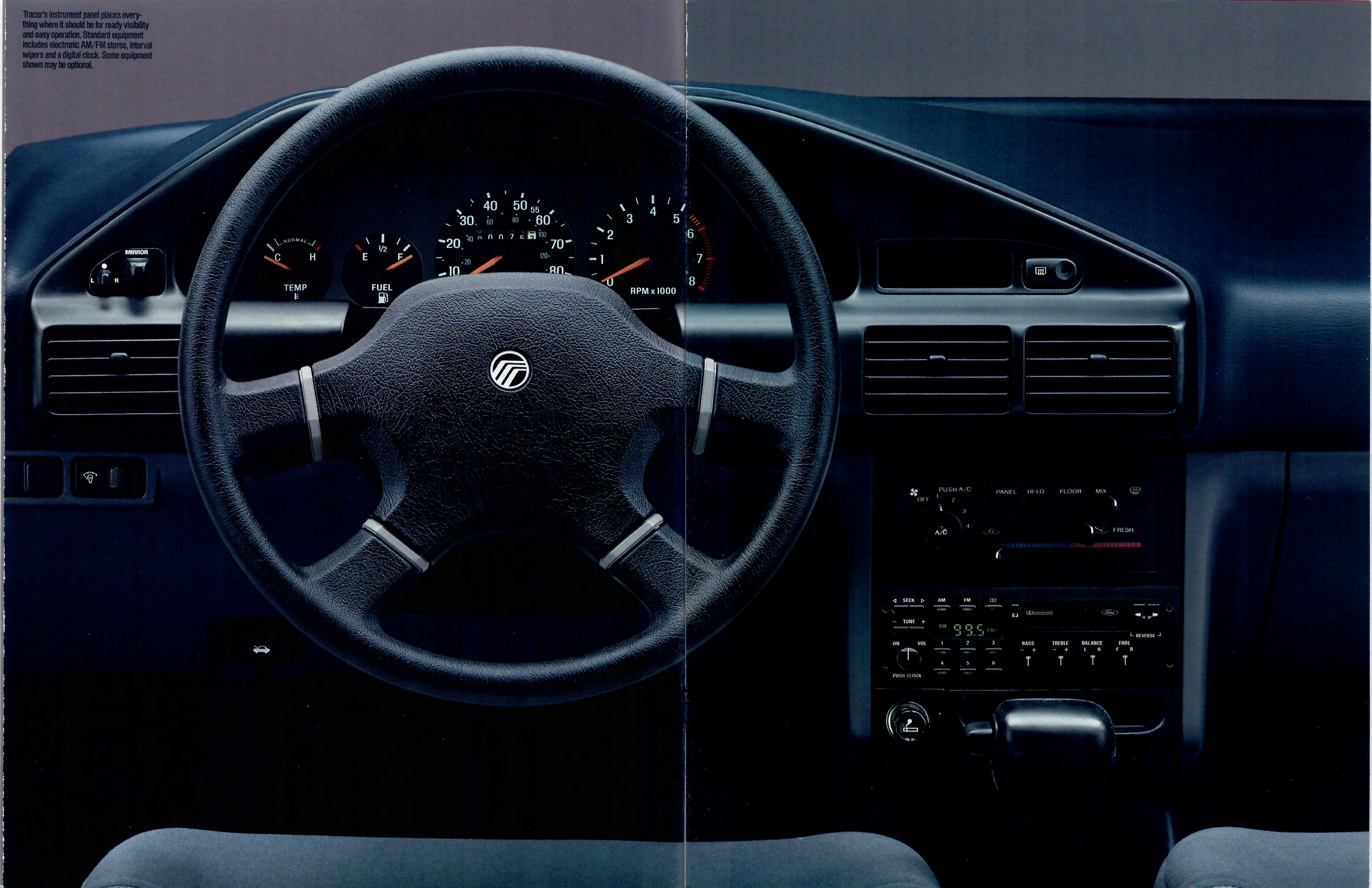
You can keep a sharp eye on performance with this standard tachometer.

Tracer's rear seat folds down, either fully or in 60/40 fashion, creating additional cargo-carrying versatility.



*See EPA statement in back of catalog.

Tracer's instrument panel places everything where it should be for ready visibility and easy operation. Standard equipment includes electronic AM/FM stereo, interval wipers and a digital clock. Some equipment shown may be optional.



MIRROR
L R

NORMAL
C H
TEMP
E

1/2
E F
FUEL

40 50 55 60
30 60 80 100
20 40 60 80
10 20 30 40 50
RPM x 1000

OFF 1 2 3 4
PUSH A/C
A/C

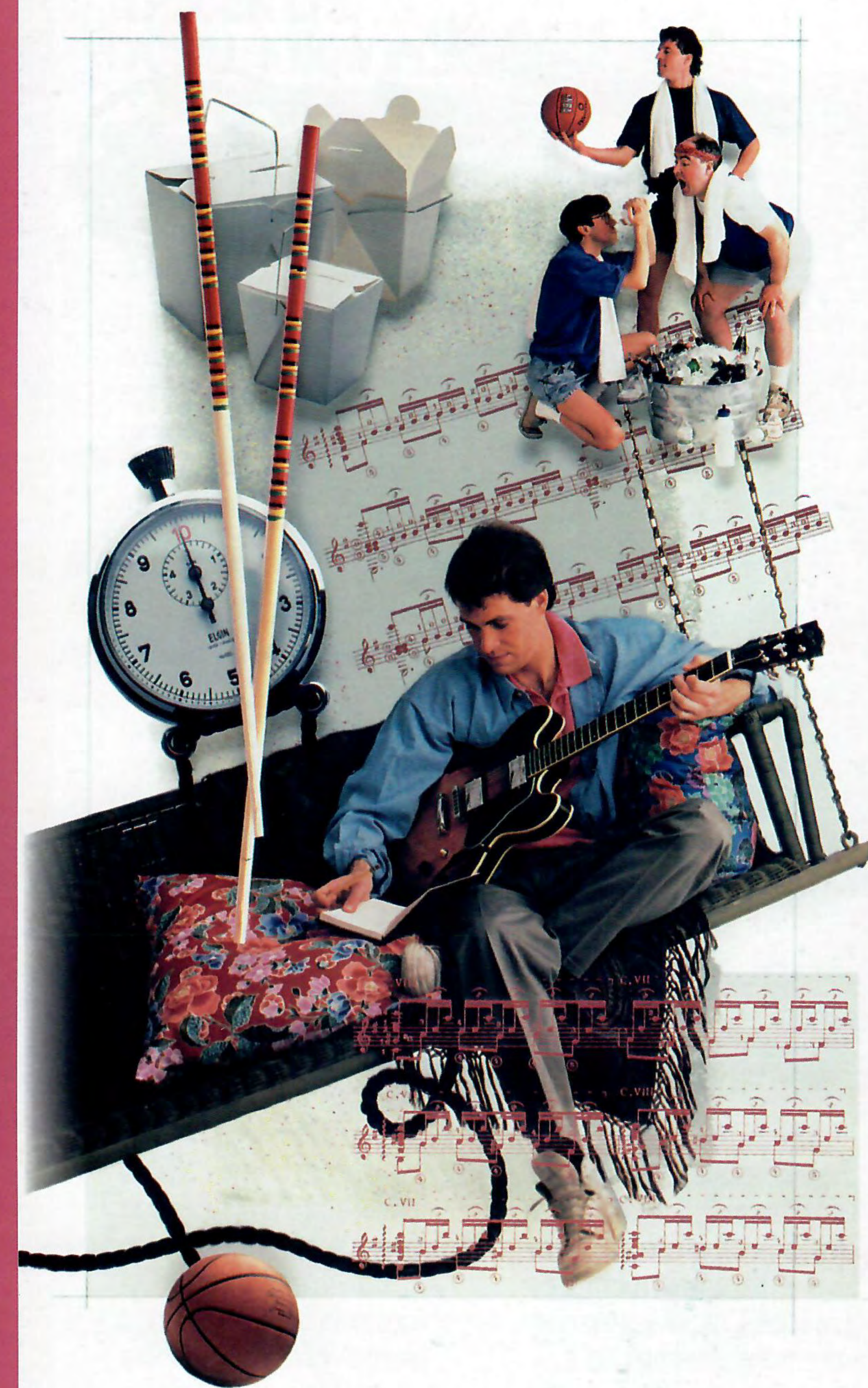
PANEL HI-LO FLOOR MIX
FRESH

SEEK AM FM DO
TUNE + 99.5 FM
ON VOL 1 2 3 4 5 6
PUSH CLOCK
BASS TREBLE BALANCE FADE
- + - + L R F B
REVERSE

PUSH CLOCK



A front air dam, rear spoiler and eight-spoke aluminum wheels give Tracer LTS its sporty sedan appearance. Featured in Black. Some equipment shown may be optional.



You always wanted to own one of those sporty little numbers, but something was missing. Like passenger room for your friends. Or a trunk that's big enough to carry all your gear. Or an engine under the hood that's as racy as the decal on top of it. So what do you do? You get in a Tracer LTS and hit the road.

TRACER LTS. YOU'LL KNOW YOU'VE TAKEN A STEP UP THE MOMENT YOU PUT YOUR FOOT DOWN.

Tracer LTS is a sporty small sedan for the individual who appreciates that while it's nice for passengers to be comfortable, the most important luxuries of all are appreciated from a driver's point of view.

You'll not only travel in style in Tracer LTS, you may just get there ahead of everybody else thanks to a dual-overhead-cam, 16-valve, electronic multi-port fuel-injected 1.8-liter engine that produces an eager-to-please 127 horsepower. It's loaded with the kind of performance features that will get your adrenaline pumping without frequent stops at the gas pump.*

This power is matched to a slick 5-speed manual overdrive transaxle with gear and final-drive ratios linked for performance. An optional 4-speed electronic automatic overdrive transaxle is also available.

Something enjoyable is in hand when you grab hold of the four-spoke leather-wrapped steering wheel and maneuver Tracer LTS over roads with a sharp case of the bends. Power-assisted rack-and-pinion

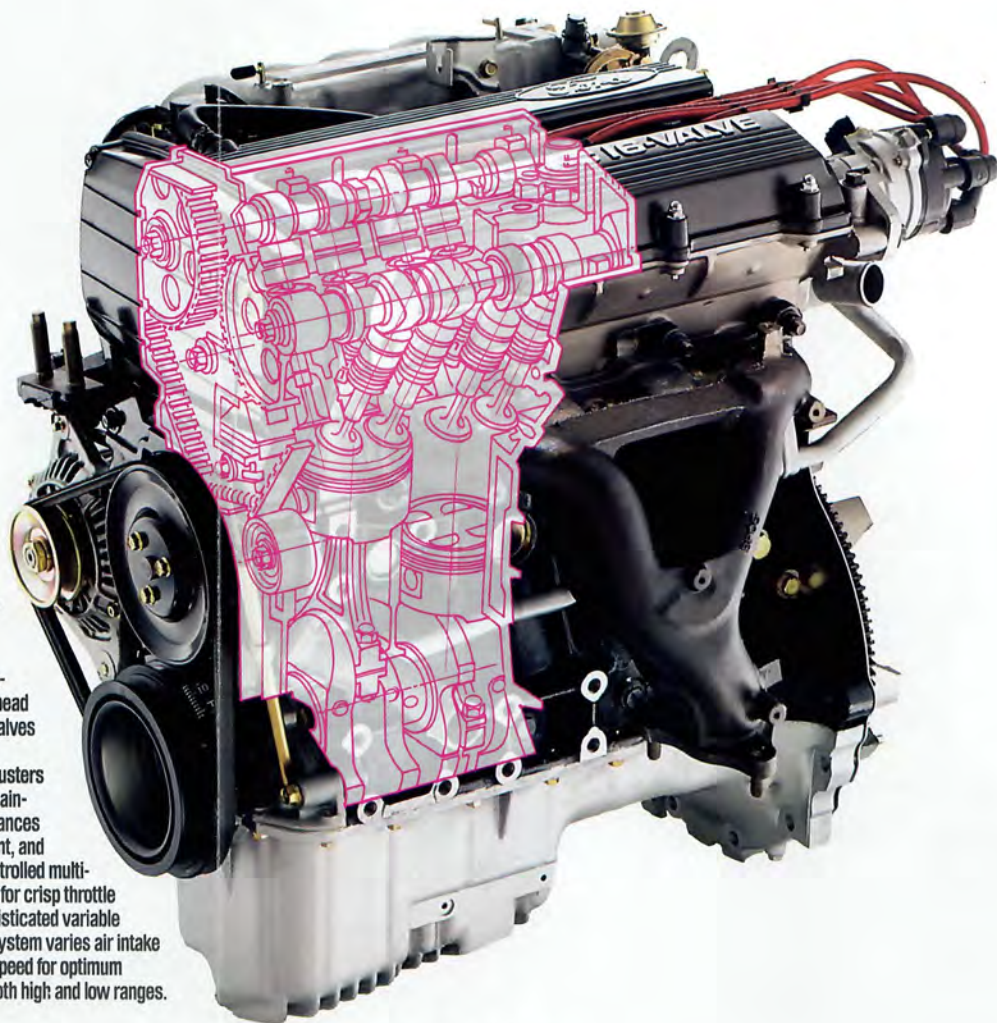
The Tracer LTS engine reads like a checklist of automotive technology, including dual overhead camshafts, four valves per cylinder with hydraulic lash adjusters that continually maintain precise clearances without adjustment, and electronically controlled multi-port fuel injection for crisp throttle response. A sophisticated variable inertia charging system varies air intake to match engine speed for optimum performance at both high and low ranges.

steering and sport-tuned independent suspension help make the twisty part of the road as enjoyable as taking the straight and narrow route.

This performance reaches the road through eight-spoke cast aluminum wheels riding on 14-inch low-profile Goodyear all-weather performance radials. Power-assisted four-wheel disc brakes bring everything to a quick halt.

Inside, Tracer LTS refutes the notion that a performance-tuned small car must be a tight fit. In fact, Tracer LTS offers ample room for five adults, including an impressive 34.6 inches of rear leg room. This room also comes with such standard interior features as analog cluster instrumentation, AM/FM cassette stereo, light group, fingertip speed control and unique cloth upholstery.

*See EPA statement in back of catalog.



Inside, Tracer LTS offers such amenities as luxurious cloth upholstery, four-way adjustable driver's seat and integral rear seat headrests. LTS interior featured in Titanium cloth. Some equipment shown may be optional.

Front seat belt not shown in order to provide a clear view of the interior. Always wear the shoulder and separate lap belts.





When you were a kid, you probably had a little red wagon. It was great for hauling stuff around. Now you're all grown up. You've got a lot more stuff. It's time to think about a wagon again.

Tracer Wagon featured in Oxford White.
Some equipment shown may be optional.

TRACER WAGON. A STYLISH WAY TO PUT IT ALL BEHIND YOU.

Tracer Wagon demonstrates the latest example of Mercury's philosophy that even though a wagon may carry boxes, it doesn't have to look like one.

Tracer Wagon's contoured shape instantly reminds one of its larger sibling, Sable Wagon. This distinctive look is more than a simple repeat of a winning formula. Tracer Wagon's smooth lines make it both pleasing to the eye and aerodynamic to the wind




Tracer Wagon provides nearly 70 cubic feet of storage space inside and even more room up top thanks to an optional luggage rack.

for better fuel efficiency at highway speeds* and reduced interior wind noise.

Tracer Wagon carries the attributes of Sable Wagon inside as well, providing seating for up to five adults or a generous 66.9 cubic feet of cargo capacity with the rear seat folded down. The versatile 60/40 rear seat allows you to carry an additional passenger or two while still leaving storage space for longer items.

This wagon is pulled along nimbly by its 1.9-liter SEFI engine, matched to a precise 5-speed manual overdrive transaxle or optional electronic 4-speed automatic overdrive. Front-wheel drive provides added traction, while the 4-wheel independent suspension with front and rear stabilizer bars offers a combination of smooth ride and responsive handling that might make you forget you bought this wagon for practical reasons.

You'll find more to like in Tracer Wagon, including power rack-and-pinion steering, power front disc brakes, dual electric remote-control mirrors and an AM/FM stereo radio with digital clock. A clear view of what's behind you in any weather is provided by a standard defroster and wiper/washer for the rear window.



A wagon as versatile as Tracer can carry the workload all week long and still give you room to play on the weekends. The one-piece liftgate goes up, the gear goes inside and away you go.



TRACER OFFERS MORE CHOICES FOR THOSE WHO CAN'T GET ENOUGH OF A GOOD THING.

By choosing a Tracer, you're saying something about the kind of car you want to drive. And by choosing from Tracer's selection of optional equipment, you're making the statement even more personal.

Depending on the Tracer you choose, you can select Preferred Equipment Packages that group popular combinations of optional equipment. These packages not only make ordering your Tracer more convenient, they provide sticker price savings over ordering these items individually.

Some of Tracer's choices are mentioned here. For details on the full list of available options and Preferred Equipment Packages, consult the standard and optional features listing at the back of the catalog.

1. All three Tracer models offer the option of a four-speed electronic automatic transaxle. The fourth-gear overdrive contributes to quieter highway cruising while promoting fuel efficiency.*

2. You'll like the sound of Tracer even more when you order the optional Premium Sound system with AM/FM stereo cassette. Sound quality is given a boost by an 80-watt amplifier and four speakers that are positioned for optimum acoustics.

3. Tilt column steering allows you to position the wheel where you feel most at ease. It's standard on LTS, optional on other models.

4. An optional power moon roof provides a scenic skylight for your travels.

5. Frost on cold winter mornings won't be a problem for long with this rear window defroster. It's optional on Tracer Sedan, standard on Wagon and LTS models.

6. Optional air conditioning helps you keep your cool in steamy situations.

7. Dual electric remote-controlled mirrors can be positioned at the touch of a button. They're optional on Tracer Sedan, standard on LTS and Wagon models.

*See EPA statement in back of catalog.



WHAT COULD BE MORE PERFECT?

You hear a lot of talk about quality these days, especially when the talk turns to cars. The standards for automotive quality keep increasing. Not just in the United States, but around the world.

Tracer provides a perfect example of this determined emphasis on quality. From the moment Tracer was first conceived, the primary focus was to design and build a car that would attain quality levels for its class that would equal or exceed the best the world has to offer.

Tracer began with a clean sheet of paper and the attitude that no part was so good that it could not be improved, and no detail was so small that it could be overlooked. This philosophy of "continuous improvement" demands that even if a car achieves best-in-class quality, there are still opportunities to improve.

Tracer demonstrates this philosophy in several interesting ways. For instance, many design specifications call for pieces to fit within .004 of an inch. Which means that if a part doesn't fit right, it doesn't fit at all. There is literally no tolerance for mistakes.

Recognizing that it takes a team of participants who are not only dedicated but fully prepared to achieve new levels of quality, each worker receives unprecedented hours of pre-job training. They work within a quality deployment system that emphasizes teamwork and places responsibility and control of the assembly process directly with the line operators, who can shut down the line at any time if they feel quality standards are not being met.

From design through engineering and in every phase of manufacturing, this philosophy of continuous improvement is employed to produce Tracers that are designed to operate with hushed levels of noise, vibration and harshness, cars that fit better and run better and last longer.

The point is that Tracer is designed and built to be a *world-class small car*; a car with quality levels that will meet or exceed anything you'll find in its class. Does Tracer measure up to the task? We'd like you to be the judge.

SELECTED OPTIONAL AND STANDARD EQUIPMENT.

ENGINES	TRACER SEDAN/WAGON	TRACER LTS SEDAN
Type	Single overhead cam In-line-4	Double overhead cam 16-valve In-line-4
Displacement	1.9 liters	1.8 liters
Horsepower (SAE Net)	88 @ 4400	127 @ 6500
Torque (SAE Net)	108 @ 3800	114 @ 4500
Fuel Delivery	Sequential multi-port electronic fuel injection	Multi-port electronic fuel injection
Compression Ratio	9.0:1	9.0:1
Engine Control	EEC-IV Electronic engine control	Electronic engine control

TRANSAXLES	
Manual	Synchronized 5-speed overdrive with self-adjusting hydraulic clutch.
Automatic	Electronically controlled 4-speed overdrive with lock-up torque converter for improved highway fuel economy.

SUSPENSION	
Front	Independent MacPherson struts with strut-mounted coil springs and stabilizer bar.
Rear	Independent MacPherson struts, strut-mounted coil springs and stabilizer bar.

STEERING	
Type	Rack-and-pinion with 23.7:1 ratio on Tracer Sedan. Power-assisted rack-and-pinion with 17.0:1 ratio on Tracer Wagon and LTS (optional on Tracer Sedan). Curb-to-curb turning diameter, 31.5 ft.

BRAKES		
Type	Four-wheel hydraulic, diagonally linked front to rear with power assist	
Front	9.25-inch* ventilated disc	10.1-inch ventilated disc
Rear	9.0-inch drum	9.88-inch solid disc

DIMENSIONS (IN INCHES)	SEDAN AND LTS	TRACER WAGON
Wheelbase	98.4	98.4
Overall length	170.9	171.3
Overall height	52.7	53.6
Overall width	66.7	66.7
Track, front/rear	56.5/56.5	56.5/56.5
Headroom; front	38.4 (37.0 w/sunroof)	38.4
Headroom; rear	37.4 (36.1 w/sunroof)	38.5
Legroom; front	41.7	41.7
Legroom; rear	34.6	34.6
Shoulder room; front/rear	53.0/53.7	53.0/53.7
Hiproom; front/rear	50.4/48.0	50.4/48.0

*10.1-inch on wagon and sedan with optional 14-inch tires and wheels.

Based on 1992 MVMA specifications.

PRODUCT CHANGES

Following publication of this catalog, certain changes in standard equipment, options, prices and the like, or product delays, may have occurred which would not be included in these pages. Your Lincoln-Mercury Dealer is your best source for up-to-date information.

Lincoln-Mercury Division reserves the right to change product specifications at any time without incurring obligations.

CAPACITIES	SEDAN AND LTS	TRACER WAGON
Cargo volume (cu. ft.)	12.1	30.6 (rear seat up), 66.9 (rear seat folded)
Fuel (gallons)	11.9**	11.9
Oil (with filter)	4.0 qt. (4.1 qt. for LTS)	4.0 qt.
Engine coolant	5.3 qt. w/manual transaxle 6.3 qt. w/automatic transaxle	5.3 qt. w/manual transaxle 6.3 qt. w/automatic transaxle
Base curb weight	2,356 lb. (2,464 for LTS)	2,468 lb.

Preferred Equipment Packages		
TRACER SEDAN	572B	573B
P175/65R-14 tires with full wheel covers	•	•
Variable interval wipers	•	•
Remote fuel-filler door release	•	•
Power steering	•	•
Dual power mirrors	•	•
Rear window defroster	•	•
Decklid release	•	•
Light group	•	•
Driver's seat tilt adjustment	•	•
Tilt steering column	•	•
Air conditioner	•	•

TRACER WAGON		573B
Driver's seat tilt adjustment	•	•
Tilt steering column	•	•
Air conditioner	•	•
Light group	•	•

TRACER COLORS SEDAN AND WAGON	
<i>Exterior Paint Colors</i>	
Alabaster	
Bright Red	
Black	
Oxford White	
Sandalwood Spice Clearcoat Metallic	
Wild Strawberry Clearcoat Metallic	
Crystal Blue Clearcoat Metallic	
Twilight Blue Clearcoat Metallic	
Light Titanium Clearcoat Metallic	
Medium Titanium Clearcoat Metallic	

<i>Interior Trim Colors</i>	
Titanium	
Crystal Blue	
Scarlet	
Light Sandalwood	

LTS	
<i>Exterior Paint Colors</i>	
Black	
Oxford White	
Wild Strawberry Clearcoat Metallic	
Twilight Blue Clearcoat Metallic	
Light Titanium Clearcoat Metallic	
Medium Titanium Clearcoat Metallic	

<i>Interior Trim Color</i>	
Titanium	

**LTS has 13.2-gallon capacity.

FUNCTIONAL FEATURES	SEDAN	WAGON	LTS
Front-wheel drive	S	S	S
1.9L I-4 single overhead cam engine	S	S	—
1.8L I-4 16-valve double-overhead-cam engine	—	—	S
Multi-port electronic fuel injection (sequential on 1.9L)	S	S	S
Electronic engine control	S	S	S
5-speed manual transaxle	S	S	S
4-speed electronically controlled automatic overdrive transaxle	0	0	0
Power-assisted brakes (4-wheel disc on LTS)	S	S	S
Manual rack-and-pinion steering	S	—	—
Power-assisted rack-and-pinion steering	0	S	S
Uniquely tuned sport handling suspension	—	—	S
48-amp/hr. maintenance-free battery	S	S	S
Isolated front suspension/engine subframe	S	S	S
Underbody PVC coating	S	S	S
4-wheel independent suspension	S	S	S

EXTERIOR FEATURES			
5-mph impact front and rear bumpers	S	S	S
Aero halogen headlamps	S	S	S
Tinted glass	S	S	S
Lower bodyside protection	S	S	S
Body color bumpers with bright insert (red insert on LTS)	S	S	S
Front end cover	A	A	A
Car cover	A	A	A
Body color bodyside moldings with bright insert (red insert on LTS)	S	S	S
Semi-flush side glass	S	S	S
Left remote-controlled breakaway mirror	S	—	—
Dual electric remote-controlled breakaway mirrors	0	S	S
Ski carrier	A	A	A
Rear window wiper/washer	—	S	—
Front air dam	—	—	S
Translucent grille	—	—	S
Decklid spoiler	—	—	S
Luggage rack	A	0	A
Remote keyless entry	A	A	A
Power moonroof	0	—	0

INTERIOR COMFORT AND CONVENIENCE FEATURES	SEDAN	WAGON	LTS
Reclining front bucket seats with adjustable head restraints	S	S	S
60/40 split-fold rear seat with integral headrests	S	S	S
Cloth interior trim (unique on LTS)	S	S	S
Fixed interval windshield wipers	S	—	—
Variable interval windshield wipers	0	S	S
Rear window defroster	0	S	S
Side window demisters	S	S	S
Rear seat heat ducts	S	S	S
Front and rear floor mats	A	A	A
Front door map pockets	S	S	S

INTERIOR COMFORT AND CONVENIENCE FEATURES	SEDAN	WAGON	LTS
4-way driver seat adjustment	0	0	S
Passenger seat back map pocket	S	S	S
Remote fuel-filler door release	0	S	S
Remote decklid release	0	—	S
Anti-theft system	A	A	A
Air conditioner	0	0	0
Tilt steering column	0	0	S
Front 2-point automatic shoulder belt restraint system with manual lap belts	S	S	S
3-point active rear seat belts	S	S	S
Full center console with storage and cupholders	S	S	S
Grab handles with rear coat hooks	S	S	S
Leather-wrapped steering wheel	—	—	S
Fingertip speed control	0	0	S
Power door locks	0	0	0
Power windows	0	0	0
Cellular phone	A	A	A
Child-proof rear door locks	S	S	S
Cargo cover	—	S	—
Dual visor mirrors	S	S	S
Flash to pass	S	S	S

Light Group including: cargo area, engine compartment and dual map lights, dual illuminated visor mirrors, headlamp-on warning chime, illuminated ignition key bezel and rear door courtesy light switches

SOUND SYSTEMS			
Electronic AM/FM stereo radio with four speakers	S	S	—
Electronic AM/FM stereo cassette radio with four speakers	0	0	S
Premium Sound system with 80-watt amplifier and four speakers	0	0	0

INSTRUMENTATION			
Backlit analog cluster w/speedometer (120 mph on LTS), tachometer, fuel gauge and engine temperature gauge and trip odometer	S	S	S
Warning lights for low coolant level, low fuel level, oil pressure, brake failure, parking brake, high beam, seatbelt, alternator and turn signal/hazard indicators	S	S	S

WHEELS AND TIRES			
P175/70R-13 black sidewall, steel-belted radials	S	—	—
13-inch styled steel wheels w/hub covers	S	—	—
P175/65R-14 black sidewall, steel-belted radials	0	S	—
14-inch steel wheels with full wheel covers	0	S	—
P185/60HR-14 black sidewall all-season performance radials	—	—	S
14-inch cast aluminum wheels	—	—	S

S—Standard equipment 0—Optional equipment

A—Dealer installed accessory

For more information on available accessories please call 1-800-346-0000

Chances are, you started your day by starting your car.

Tens of millions of us do. Every day. All over the country. Surely, nothing we own is more closely and constantly intertwined with our lives than the automobile.

At Lincoln-Mercury, we never lose sight of the fact that our products go on to play a major part in the lives of people. That's why we're dedicated to bringing you cars that will not only serve you faithfully, but will also help make your life more enjoyable.

Stop by a Lincoln-Mercury dealer and see what we're doing.

Motorcraft QUALITY PARTS

Genuine Ford and Motorcraft original equipment replacement parts are engineered and manufactured to Ford's highest specifications. They're your best assurance

of quality and long-term satisfaction because these replacement parts meet the same high standards as those installed in production.



The optional Ford Extended Service Plan covers selected components on new Mercury cars for longer than the vehicle's basic warranty. The cost is so moderate for the protection offered that it could pay for itself the first time it is needed. Ask your participating Lincoln-Mercury dealer for complete details of the plan, which is available on cars sold and normally operated in the 50 United States and Canada.

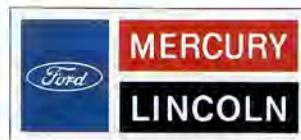



Ford Credit offers advantageous financing arrangements for qualified buyers, plus the convenience of making them right where you buy your car — at your Lincoln-Mercury dealer.

As an alternative to car ownership that may well suit your needs, there's Ford Credit's Red Carpet lease. Ask for the facts on leasing at your Lincoln-Mercury dealer.

EPA statement: 1992 EPA mileage estimates were unavailable when this publication was printed. The 1992 Mercury Tracer, however, should post good mileage figures. Ask your Lincoln-Mercury dealer for the latest information.

Option availability: Options shown or described in this catalog are available at extra cost and may be offered only in combination with other options or subject to additional ordering requirements or limitations.



LINCOLN-MERCURY DIVISION 

Buckle up — together we can save lives.

Litho in U.S.A. (599M) 7/91 P-1101



Printed on recycled paper